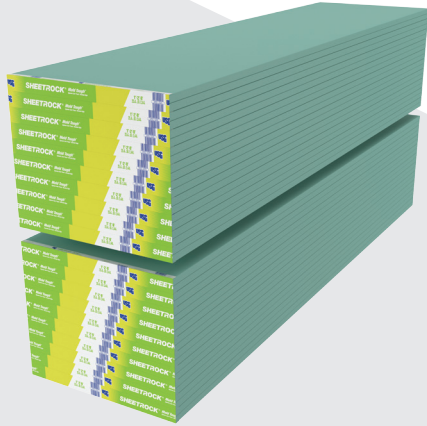


# USG SHEETROCK® BRAND MOLD TOUGH® GYPSUM LINER PANELS



## High-performance panels with moisture- and mold-resistance

- Specially designed and engineered for fire resistance rated assemblies
- UL Classified as to fire resistance, surface burning characteristics and noncombustibility
- Comprehensive product and system testing assures long-term performance and safety

## DESCRIPTION

USG Sheetrock® Brand Mold Tough® Gypsum Liner Panels have a noncombustible, moisture- and mold-resistant gypsum core that is encased in moisture- and mold-resistant, 100 percent recycled blue face and back papers. The panels are UL Classified as to fire resistance (Type SLX) and feature double beveled edges for easy installation. Panel may be substituted for USG Sheetrock® Brand Gypsum Liner Panels in all Shaft Wall and Area Separation Firewall systems.

**Note:** USG Sheetrock® Brand Mold Tough® Gypsum Liner Panels, as identified in this document, have been tested for fire resistance, structural and acoustical performance with USG Sheetrock® Brand Shaft Wall and Area Separation Wall Systems framing components. When used together, USG Sheetrock® Brand Shaft Wall and Area Separation Wall System components ensure superior system performance and safety. If alternative system components are used with USG Sheetrock® Brand Mold Tough® Liner Panels, the manufacturer(s) of the substituted component(s) should be consulted to confirm system performance properties.

## LIMITATIONS

1. Avoid exposure to sustained temperatures exceeding 125°F (52°C).
2. Avoid exposure to excessive, repetitive or continuous moisture before, during and after installation. Eliminate sources of moisture immediately.
3. Nonload-bearing.

## PRODUCT DATA

**Size:** Panels are 1" (25.4 mm) thick x 24" (610 mm) wide and available in 8', 10' and 12' (2438, 3048 and 3658 mm) lengths.

**Weight:** Approx. 4.0 lbs/sf (19.5 kg/m<sup>2</sup>)

**Labeling:** Each panel bears the Underwriters Laboratories, Inc. Mark as evidence of UL Classifications as to fire resistance, surface burning characteristics and noncombustibility.

## TEST DATA

### Moisture and Mold Resistance

Per ASTM C473 test method, the average water absorption for panels is not greater than 5 percent by weight after two-hour immersion.

When tested in accordance with ASTM D3273, *Standard Test Method for Resistance to Growth of Mold on the Surface of Interior Coatings in an Environmental Chamber*, the panels meet or exceed ASTM C1396 specifications.

This ASTM lab test may not accurately represent the mold performance of building materials in actual use. Given unsuitable project conditions during storage, installation or after completion, any building material can be overwhelmed by mold. To manage the growth of mold, the best and most cost-effective strategy is to protect building products from water exposure during storage and installation and after completion of the building. This can be accomplished by using good design and construction practices.

## COMPLIANCE

USG Sheetrock® Brand Mold Tough® Gypsum Liner Panels comply with specification ASTM C1396.

Per ASTM E136 test methods, noncombustible gypsum core.

Per ASTM E84 test method, Class A, flame spread index of 20 and smoke developed index of 0.

## SUBMITTAL APPROVALS

<b>Job Name</b>	
<b>Contractor</b>	<b>Date</b>

### ADDITIONAL INFORMATION

This document is intended as a product submittal only. For complete information regarding USG Sheetrock® Brand Cavity Shaft Wall Systems, please refer to the following literature:

- The Gypsum Construction Handbook
- USG Sheetrock® Brand Area Separation Wall Systems Brochure (SA925)
- USG Sheetrock® Brand Cavity Shaft Wall Systems Brochure (SA926)
- USG Sheetrock® Brand Cavity Shaft Wall System Submittal Sheet (WB2279)

### PRODUCT INFORMATION

See usg.com for the most up-to-date product information.

### TRADEMARKS

The trademarks USG, SHEETROCK, IT'S YOUR WORLD, BUILD IT., the USG logo, the design elements and colors, and related marks are trademarks of USG Corporation or its affiliates.

### NOTE

Products described here may not be available in all geographic markets. Consult your U.S. Gypsum Company sales office or representative for information.

### NOTICE

We shall not be liable for incidental and consequential damages, directly or indirectly sustained, nor for any loss caused by application of these products not in accord with current instructions or for other than the intended use. Our liability is expressly limited to replacement of defective products except where provided otherwise in a product specific warranty. The information in this document is subject to change without notice. USG Corporation assumes no responsibility for any errors that may inadvertently appear in this document.

### SAFETY FIRST!

Follow good safety and industrial hygiene practices during handling and installing all products and systems. Take necessary precautions and wear the appropriate personal protective equipment as needed. Read material safety data sheets and related literature on products before specification and/or installation.

### WARNING

Dust can contain silica. Prolonged and repeated breathing of silica dust can cause lung damage and cancer. If cutting with a power tool, use a wet or vacuum saw to reduce the amount of dust generated. Dust can be corrosive to eyes, skin and respiratory tract. Contact can cause severe chemical burns. Wear eye, skin and respiratory protection. If eye contact occurs, flush immediately with water for 30 minutes. If ingested, call a physician. Product safety information: 800 507-8899 or usg.com Customer Service: 800 USG.4YOU (874-4968).  
**KEEP OUT OF REACH OF CHILDREN.**

### PRODUCT INFORMATION

See usg.com for the most up-to-date product information.

### TRADEMARKS

The trademarks USG, SHEETROCK, MOLD TOUGH, IT'S YOUR WORLD, BUILD IT., the USG logo, the design elements and colors, and related marks are trademarks of USG Corporation or its affiliates.

### NOTE

Products described here may not be available in all geographic markets. Consult your U.S. Gypsum Company sales office or representative for information.

### NOTICE

We shall not be liable for incidental and consequential damages, directly or indirectly sustained, nor for any loss caused by application of these products not in accord with current instructions or for other than the intended use. Our liability is expressly limited to replacement of defective products except where provided otherwise in a product specific warranty. The information in this document is subject to change without notice. USG Corporation assumes no responsibility for any errors that may inadvertently appear in this document.

### SAFETY FIRST!

Follow good safety and industrial hygiene practices during handling and installing all products and systems. Take necessary precautions and wear the appropriate personal protective equipment as needed. Read material safety data sheets and related literature on products before specification and/or installation.

800 (874-4968)  
usg.com

Manufactured for  
United States Gypsum Company  
550 West Adams Street  
Chicago, IL 60661

WB2389-USA-ENG/3-19  
© 2019 USG Corporation and/or  
its affiliates. All rights reserved.  
Printed in U.S.A.

**USG**   
IT'S YOUR WORLD. BUILD IT.®