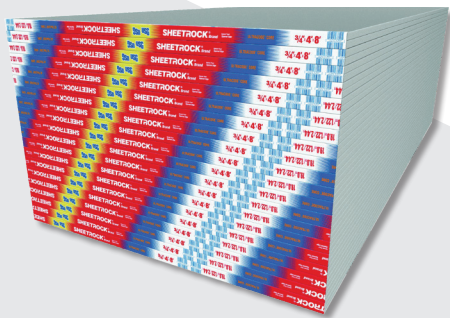


USG SHEETROCK® BRAND ULTRACODE® CORE PANELS



3/4 in. (19.1 mm) Type X panels that reduce labor and material costs

- Can provide 1-4 hr. fire ratings with fewer layers of gypsum panels than are typically required when used in approved applications
- Comply with ASTM C1396, *Standard Specification for Gypsum Board*, for 3/4 in. (19.1 mm) and Type X gypsum wallboard
- Underwriters Laboratories Inc. (UL) Classification as to fire resistance, surface-burning characteristics and noncombustibility
- Achieved GREENGUARD Gold Certification and qualifies as a low VOC emitting material (meets CA 01350)

DESCRIPTION

USG Sheetrock® Brand Ultracode® Core Panels (UL Type ULTRACODE) are 3/4 in. (19.1 mm) Type X panels that can provide 1-4 hr. fire ratings with fewer layers of gypsum panels than are typically required when used in approved applications. These enhanced fire-resistant gypsum panels feature a noncombustible gypsum core that is encased in 100% recycled face and back papers that form a high strength composite design. The face paper is folded around the long edges to reinforce and protect the core, and the ends are cut square and even. The long edges of the panels are tapered, allowing joints to be reinforced and concealed with USG Sheetrock® Brand joint treatment systems. The panels are UL Classified for fire resistance and can be used in any UL Design in which Type ULTRACODE panels are listed. On the face, along the long edge of each panel, the UL Type Designation is printed for easy identification by building inspectors.

INTENDED FOR

- Commercial or residential applications where 3/4 in. (19.1 mm) Type X panels are required
- New or repair and remodel construction
- Load-bearing and nonload-bearing wood- or steel-framed fire-rated walls and ceilings
- Areas where space is limited (such as mechanical rooms)

LIMITATIONS

1. Avoid sustained exposure to temperatures exceeding 125°F (52°C).
2. Avoid exposure to excessive, repetitive or continuous moisture before, during and after installation. Eliminate sources of moisture immediately.
3. Must be stored off the ground and under cover in accordance with Gypsum Association's GA-801, *Handling and Storage of Gypsum Panel Products*.

INTERIOR INSTALLATION, FINISHING AND DECORATING INSTALLATION

For maximum framing spacing in non-fire-resistance-rated applications of gypsum panel products, refer to Gypsum Association's GA-216, *Specifications for the Application and Finishing of Gypsum Panel Products* or ASTM C840, *Standard Specification for Application and Finishing of Gypsum Board*. For fire-resistance-rated applications, refer to the published UL Design or GA File Number.

Maximum Framing Spacing for Single-Layer Application

Location	Gypsum Panel Thickness	Gypsum Panel Orientation to Framing	Maximum Framing Spacing OC
Ceilings ¹	3/4 in. (19.1 mm)	Parallel	16 in. (406 mm)
		Perpendicular	24 in. (610 mm)
Walls	3/4 in. (19.1 mm)	Parallel	24 in. (610 mm)
		Perpendicular	24 in. (610 mm)

Maximum Framing Spacing for Multi-Layer Application Without Adhesive Between Layers

Location	Gypsum Panel Thickness	Gypsum Panel Orientation to Framing	Maximum Framing Spacing OC
Ceilings ¹	3/4 in. (19.1 mm)	Parallel	16 in. (406 mm)
		Perpendicular	24 in. (610 mm)
Walls	3/4 in. (19.1 mm)	Parallel	24 in. (610 mm)
		Perpendicular	24 in. (610 mm)

Note:

1. On ceilings to receive water-based texture material, 3/4 in. (19.1 mm) gypsum board shall be applied either parallel to framing spaced at 16 in. (406 mm) OC or perpendicular to framing spaced maximum 24 in. (610 mm) OC. See Appendix A.3 of Gypsum Association's GA-216, *Specifications for the Application and Finishing of Gypsum Panel Products* for more information.

**INTERIOR INSTALLATION,
FINISHING AND DECORATING, CONT.**
FINISHING AND DECORATING

For high-quality finishing results, USG recommends USG Sheetrock® Brand finishing products.

Painting products and systems should be used that comply with recommendations and requirements in Appendices of ASTM C840. For priming and decorating with paint, texture or wall covering, follow manufacturer's directions for materials used. Gypsum Association's GA-214, *Recommended Levels of Finish for Gypsum Board, Glass Mat and Fiber-Reinforced Gypsum Panels* should be referred to in order to determine the level of finishing needed to ensure a surface properly prepared to accept the final decoration.

All surfaces, including applied joint compound, must be thoroughly dry, dust-free and not glossy. Prime with USG Sheetrock® Brand First Coat™ Primer or with an undiluted, interior latex flat paint with high-solids content. Allow to dry before decorating.

To improve fastener concealment where gypsum panel walls and ceilings will be subjected to critical artificial or natural lighting, or will be decorated with a gloss paint (eggshell, semigloss or gloss), the gypsum panel should be skim coated with joint compound. This equalizes suction and texture differences between the drywall face paper and the finished joint compound before painting. When a Level 5 finish is required, use USG Sheetrock® Brand Tuff-Hide™ Primer-Surfacer. See *USG Sheetrock® Brand Tuff-Hide™ Primer-Surfacer Submittal Sheet (J1613)* for limitations and application instructions.

For more information, refer to USG literature *Finishing & Decorating Gypsum Panels White Paper (J2010)*.

TEST DATA

Property		ASTM Test Method	Requirement	UL Type ULTRACODE
Noncombustibility		E136	Noncombustible	Meets
Surface-burning characteristics	Flame spread	E84	Flame Spread Index, not greater than 25 ²	15
	Smoke developed	E84	—	0
	Class A	E84	Flame spread not greater than 25 and smoke developed not greater than 450	Meets
Core hardness	Field	C473 (B)	Not less than 11 lbf (49 N) ²	Meets
	End	C473 (B)	Not less than 11 lbf (49 N) ²	Meets
	Edge	C473 (B)	Not less than 11 lbf (49 N) ²	Meets
Flexural strength	Parallel	C473 (B)	Not less than 56 lbf (249 N) ²	Meets
	Perpendicular	C473 (B)	Not less than 167 lbf (743 N) ²	Meets
Humidified deflection		C473	Not greater than 5/8 in. (15.9 mm) ²	Meets
Nail pull resistance		C473 (B)	Not less than 97 lbf (432 N) ²	Meets

Note:

2. Per ASTM C1396 for 3/4 in. (19.1 mm) gypsum wallboard.

PRODUCT DATA

	UL Type ULTRACODE
Thickness	3/4 in. (19.1 mm)
Lengths³	8-12 ft. (2438-3658 mm)
Width	4 ft. (1219 mm)
Weight⁴, nominal	2.8 lb./sq. ft. (13.7 kg/sq. m.)
Edges	Tapered
Packaging	Two panels per bundle

Notes:

3. Other sizes available by special order. Check with your local USG representative for availability.

4. Represents approximate weight for design and shipping purposes. For specific product weight in your area, contact your local USG representative or call the Customer Service Center at 800 950-3839.

COMPLIANCE

- Comply with ASTM C1396 for 3/4 in. (19.1 mm) and Type X gypsum wallboard
- Classified as a Class A Interior Finish Material per Section 803.1 of the International Building Code® (IBC®)
- UL Classification as to fire resistance, surface-burning characteristics and noncombustibility
- Achieved GREENGUARD Gold Certification and qualifies as a low VOC emitting material (meets CA 01350)

SUBMITTAL APPROVALS

Job Name	
Contractor	Date

PRODUCT INFORMATION

See usg.com for the most up-to-date product information.

GREENGUARD Certified products are certified to GREENGUARD standards for low chemical emissions into indoor air during product usage. For more information, visit ul.com/gg.

CAUTION

Dust may cause irritation to eyes, skin, nose, throat and upper respiratory tract. Cut and trim with a utility knife or hand saw to minimize dust levels. Power tools must be equipped with a dust collection system. Wear eye, skin and respiratory protection if necessary. If eye contact occurs, flush thoroughly with water for 15 minutes. If irritation persists, call a physician. Do not swallow. If swallowed, call a physician. For more information call Product Safety: 800 507-8899 or see the SDS at usg.com.

KEEP OUT OF REACH OF CHILDREN.

TRADEMARKS

USG, FIRST COAT, SHEETROCK, TUFF-HIDE, ULTRACODE, IT'S YOUR WORLD. BUILD IT., the USG logo, the design elements and colors, and related marks are trademarks of USG Corporation or its affiliates. The trademarks IBC and INTERNATIONAL BUILDING CODE are trademarks of International Code Council, Inc.

NOTE

Products described here may not be available in all geographic markets. Consult your USG Company sales office or representative for information. The information in this document is subject to change without notice. USG Corporation assumes no responsibility for any errors that may inadvertently appear in this document.

NOTICE

We shall not be liable for incidental and consequential damages, directly or indirectly sustained, nor for any loss caused by application of these goods not in accordance with current printed instructions or for other than the intended use. Our liability is expressly limited to replacement of defective goods. Any claim shall be deemed waived unless made in writing to us within thirty (30) days from date it was or reasonably should have been discovered.

SAFETY FIRST!

Follow good safety and industrial hygiene practices during handling and installation of all products and systems. Take necessary precautions and wear the appropriate personal protective equipment as needed. Read Safety Data Sheets and related literature on products before specification and/or installation.

800 USG.4YOU
800 (874-4968)
usg.com

Manufactured by
United States Gypsum Company
550 West Adams Street
Chicago, IL 60661

WB2167B-USA-ENG/rev. 4-20
© 2020 USG Corporation and/or
its affiliates. All rights reserved.
Printed in U.S.A.

