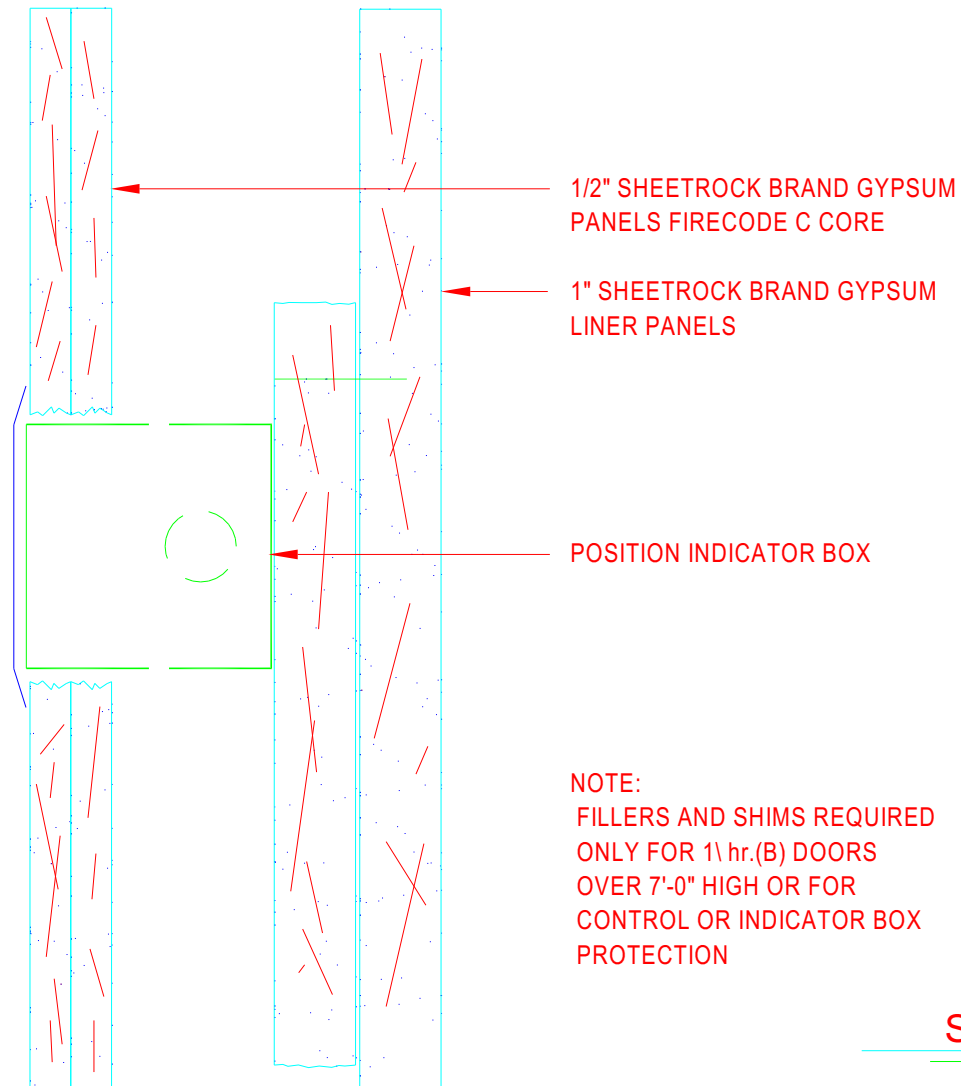


This USG System Detail must not be used without a complete evaluation by owner's design professional to verify the suitability of its use with your specific application.

Construction Solution Details: Position Indicator Penetration



NOTE:
FILLERS AND SHIMS REQUIRED
ONLY FOR 1 hr.(B) DOORS
OVER 7'-0" HIGH OR FOR
CONTROL OR INDICATOR BOX
PROTECTION

Shaft Wall

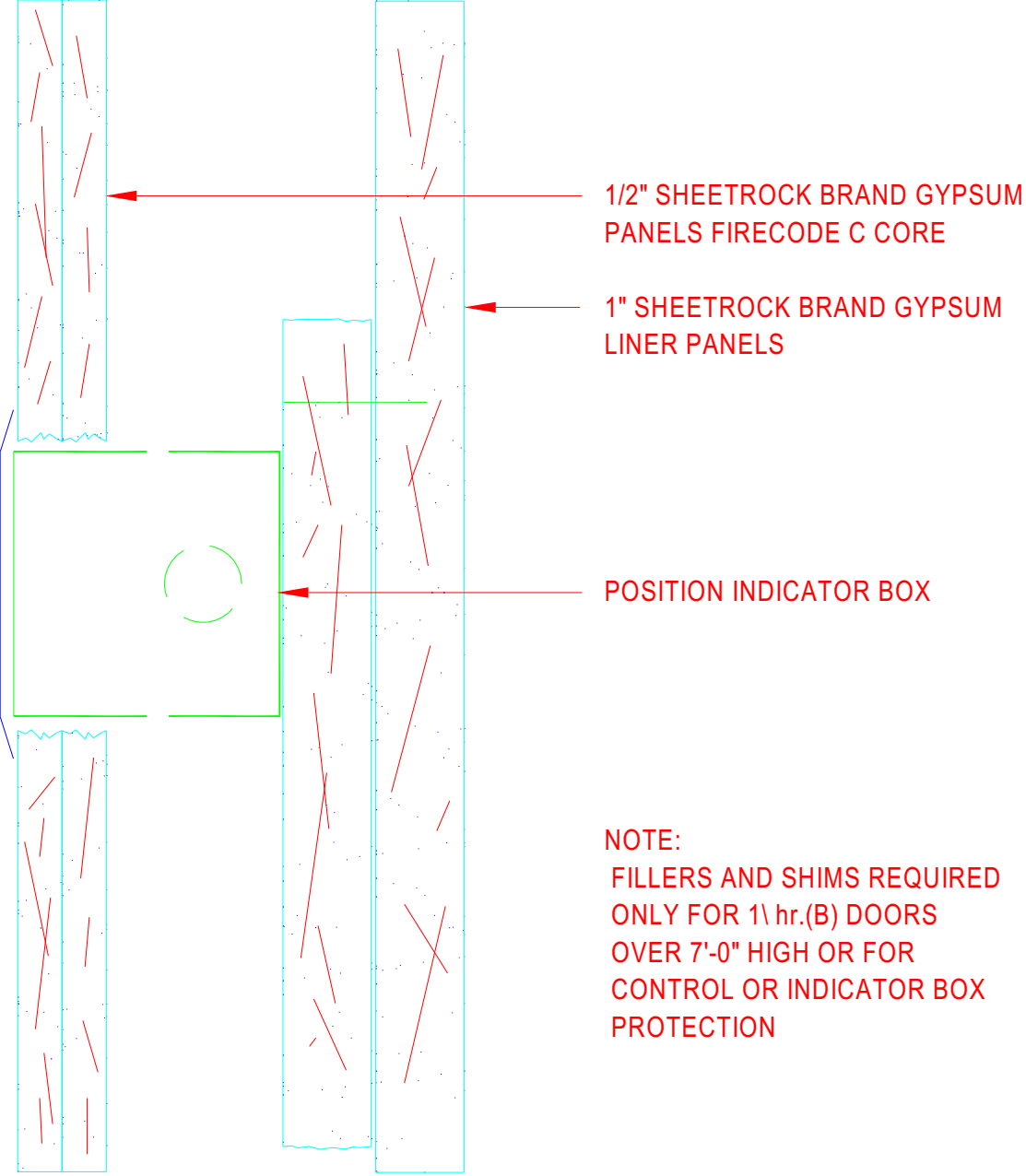


USG Corporation
125 South Franklin Street
Chicago, IL 60606-4678

Architectural and Technical Solutions
800-874-4968

Drawn by: RK
Approved: SM
Revision: DN
Scale: Not to Scale

Date: August 15, 2006
Date:
Change:
Project:
File: 093100049



1/2" SHEETROCK BRAND GYPSUM
PANELS FIRECODE C CORE

1" SHEETROCK BRAND GYPSUM
LINER PANELS

POSITION INDICATOR BOX

NOTE:
FILLERS AND SHIMS REQUIRED
ONLY FOR 1\ hr.(B) DOORS
OVER 7'-0" HIGH OR FOR
CONTROL OR INDICATOR BOX
PROTECTION