

USG™ Drywall Suspension System – Wall-to-Wall



USG Wall-to-Wall Drywall Suspension System/
SHEETROCK Gypsum Panels

LEED Credits

Recycled Content: Up to 54%

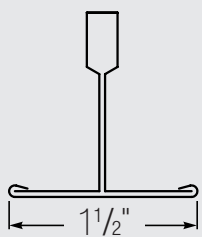
MR				EQ		
Waste Reduction	Recycled Content	Regional Materials	Rapidly Renewable Materials	Low-Emitting Materials	Daylight and Views	Acoustical Performance
●	●	●				

Features and Benefits

- Simplifies design and construction for corridors and small rooms.
- Eliminates hanger wires and cross tees for unsupported spans up to 8' with 1/2" drywall and 7'-6" with 5/8" drywall.
- Lowest installed cost system for corridors and small rooms.
- Pre-engineered components allow easy transition between ceiling types and elevations.
- G40 hot dipped galvanized system suitable for interior and exterior applications.
- Standard and custom lengths available.
- Manufactured in accordance with ASTM C645.
- Industry leading spans.
- Fulfills requirements for seismic categories D, E and F.

Applications

- Condominiums & apartments
- Healthcare
- Education
- Hotels
- Dormitories
- Office



Profile

USG™ Drywall Suspension System – Wall-to-Wall

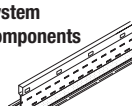
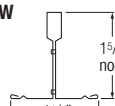

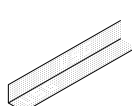
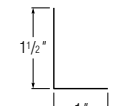

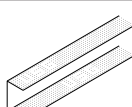

To order samples/literature:

– Web: usg.com
– E-mail: samplit@usg.com
– Fax: 888.874.2348

Technical Services: 800.USG.4YOU

Web Sites: usg.com
usgdesignstudio.com
sustainableceilings.com
seismicceilings.com

See usg.com for
the most up-to-date
product information.

System Components	Length	Height	Face Width	Item No.	Class	Load Test Data ¹					
						Simple Span L/240 Uniform Load (lbs./LF)					
						4'	5'	6'	7'	7'-6"	8'
 Straight Tee 	6', 8', 10', 12', 14', Custom	1.617"	1-1/2"	DGW26s (up to 54% recycled cont.) 	Class A	29.84	15.28	8.84	5.57	4.53	3.73
 Moldings³ 	12'	1-1/2"	1"	DGWM24 (up to 54% recycled cont.) 	—	—	—	—	—	—	—
	12'	1-9/16"	1"	DGCM25 (up to 65% recycled cont.) 	—	—	—	—	—	—	—

Accessory

DGSC180 Splice Clip



* See AC3152 for additional main tee splice options.

High Recycled Content

Classified as containing greater than 50% total recycled content. Total recycled content is based on product composition of post-consumer and pre-consumer (post-industrial) recycled content per FTC guidelines.

Membrane Loads		
Span	O.C. Spacing (in.)	Maximum Load (lbs./SF)
2'	16	179.04
	24	119.36
4'	16	22.38
	24	14.92
5'	16	11.46
	24	7.64
6'	16	6.63
	24	4.42
7'	16	4.18
	24	2.78
7'-6"	16	3.40
	24	2.26
8'	16	2.80
	24	1.86
	24	*14.92
10'	16	*11.46
	24	*7.64
12'	16	*6.63
	24	*4.42
***16'	16	*2.8
	24	*1.86
	24	**4.42

Notes:

- *Vertical support at mid-span
- **Two vertical supports at 1/3 point
- ***Spans greater than 14' require Main-tee splice, refer to the AC3152 for splice details

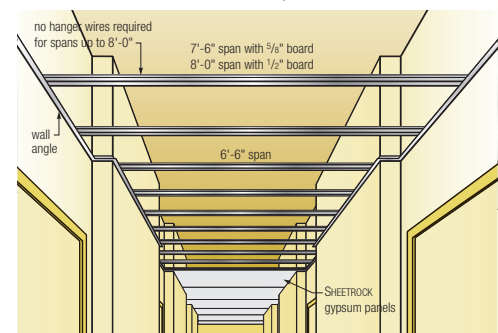
Vertical Support

Tee Spacing	Drywall	Span	Support Requirement
16" o.c.	1/2"	up to 8'	None
		***8' 1"–16'	Mid-span
		***16' 1"–24'	Two supports at 1/3 points
16" o.c.	5/8"	up to 7'-6"	None
		***7'-7" to 15'	Mid-span
		***15'-1" to 22'-6"	Two supports at 1/3 points
24" o.c.	5/8"	up to 6'-6"	None
		6'-7" to 13'	Mid-span
		***13'-1" to 19'-6"	Two supports at 1/3 points

Notes:

- ***Spans greater than 14' require Main-tee splice, use DGSC180 splice clip or alternative splicing options described in system brochure – AC3152

See Load Tables For Span Data



Physical Data/ Footnotes

Product literature & samples

System brochure: AC3152
Data sheet: AC3230

Finishes

Galvanized.

Material

Double-web tee, G40 hot-dipped, galvanized steel.

Recycled content

For details, see RC tables or the LEED report generator at usgdesignstudio.com.

Installation

Must be installed in compliance with ASTM C754, ASTM E580 and standard industry practices.

Footnotes

1. Load test data shows uniform load in lbs./LF based on simple span tests in accordance with ASTM deflection limit on L/240.
2. Attachment to wall structure is critical.
3. Members conform to performance standard C645.

4. Installation per ASTM C636.
5. Installation per ASTM C754.
6. ICC evaluation report ESR-1222.
7. CA Department of State Architect - see ESR-1222 per IR-A5 and PA 118.
8. City of LA - RR 25764.



Manufactured by USG Interiors, Inc.
550 West Adams Street
Chicago, IL 60661

The following are trademarks of USG Interiors, Inc. or a related company: COMPASSO, SHETROCK, USG.

Safety First! Follow good safety/industrial hygiene practices during installation. Wear appropriate personal protective equipment. Read MSDS and literature before specification and installation.

AC3230/rev. 4-10
© 2010, USG Interiors, Inc.
Printed in U.S.A.