

Project Profile



Levelrock® 2500 Floor Underlayment Levelrock® CSD® Early Exposure™ Floor Underlayment

Type of Application
Entertainment Facilities

Project
Wilderness at the Smokies

Location
Sevierville, Tennessee

Product(s)
LEVELROCK® 2500 Floor Underlayment
LEVELROCK® CSD® EARLY EXPOSURE™ Floor Underlayment
LEVELROCK™ SRM-25™ Sound Reduction Mat

LEVELROCK Applicator
Laxton Tile, Inc.



LEVELROCK® 2500 and LEVELROCK® CSD® EARLY EXPOSURE™ floor underlayments are key components in keeping this large Smoky Mountains entertainment complex on track.

Nestled at the foot of the Great Smoky Mountains is a construction site featuring one of the largest series of contracts for poured flooring currently underway in all of North America.

A total of 472,000 square feet of floor underlayment is being installed at Wilderness at the Smokies, a resort development in Sevierville, Tennessee. When completed, it will feature condominiums, hotels, water parks and more. A part of the Bridgemont Development Project, which also includes restaurants and shopping, Wilderness at the Smokies is expected to top all Tennessee tourist destinations in attendance except for the Great Smoky Mountains National Park and Dollywood.

"It has been a ton of work," says Craig Laxton, president and owner of Laxton Tile Inc., Mascot, Tennessee, which has contracts to pour underlayment at several Wilderness at the Smokies structures. "We used more than 5,000 bags of underlayment mix on just one hotel alone."

Solving Problems

Like many projects, Wilderness at the Smokies has a fast-track construction schedule, placing tough demands for speed and quality work upon subcontractors such as Laxton Tile. Laxton, however, is up for the challenge. He has been in the flooring business for 28 years, installing ceramic tile, stone, marble and poured floor underlayments.

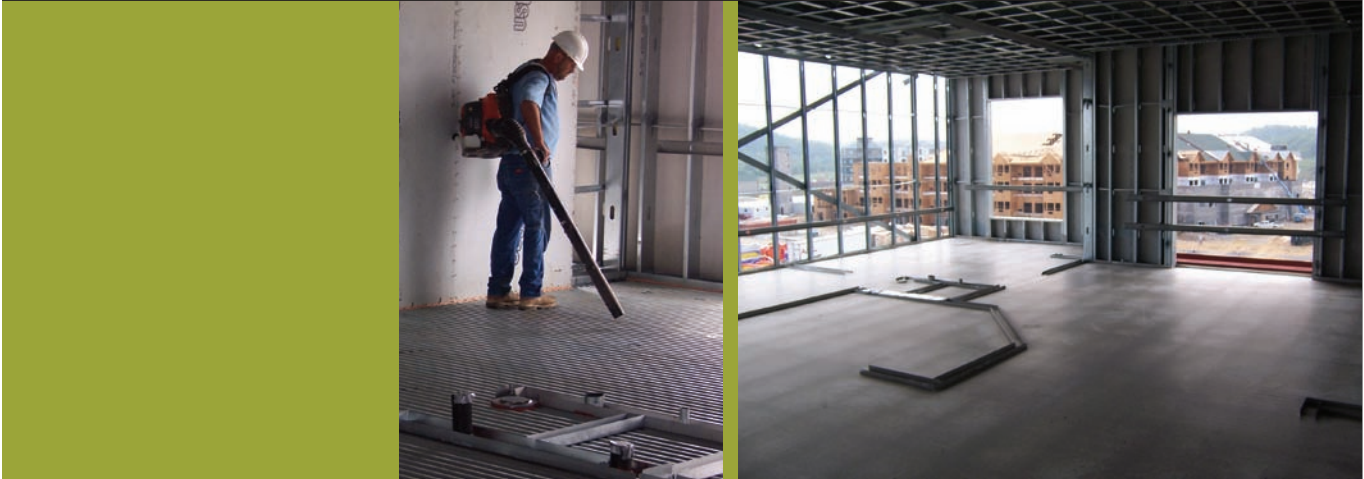
"The big jobs are sweet because you get to stay on them and make good use of your time," says Laxton, who has a 12-man crew and sand piles strategically located throughout the site. "This is the largest job I've ever had in my life."

It may also be the most fulfilling job Laxton has ever done. His underlayment pours solve several key problems for the project's general contractors, who include Welbro Building Corporation and Kraus-Anderson Construction Company.

Here are some of the underlayment's benefits:

Sound Control: The Events Center Hotel has 234 rooms. Completed in July 2008, the hotel was framed with wood studs and OSB (oriented strand board), and features LEVELROCK® 2500 floor underlayment and LEVELROCK™ SRM-25™ sound reduction mat. The system, which is offered by USG, is designed to reduce footstep noise significantly.

A second hotel project is also underway nearby. This hotel will have condominium units and be even bigger than the Wilderness Events Center Hotel. According to Laxton, the structure is expected to use more than 10,000 bags of underlayment and, of course, sound control will be a hallmark of this facility, too.



Speedy Installation: Two mid-rise condominium buildings, part of the Wilderness-Wyndham Timeshare, feature light-gauge steel frame construction, corrugated steel decking and USG's LEVELROCK® CSD® EARLY EXPOSURE™ floor underlayment. One building is 151,000 square feet, while the other measures 177,000 square feet in size.

For these pours, Laxton is subcontracting from Worthington Integrated Building Systems (WIBS), which is contracted to Welbro. The schedule calls for two to three pours per week, which is easy for Laxton to fulfill. The typical set time for CSD EARLY EXPOSURE floor underlayment is two to three hours. The underlayment normally dries completely in 10 to 14 days versus the 28 days required for poured concrete. It also weighs up to 55 percent less than three inches of concrete.

"What makes the product unique is that you get a lot more square footage per day," says Laxton. "It's a good-working product. I got the cube tests back, and we had some great results. The pours all exceeded the minimum rating of 3,500 psi."

Exposure Advantage

LEVELROCK CSD EARLY EXPOSURE floor underlayment incorporates an innovative hybrid cementitious formulation that provides high early strength and outstanding resistance to moisture. As a result, it can be poured up to 60 days before a building's permanent windows and doors are installed in areas not subject to freezing conditions (up to 30 days in areas subject to freezing conditions). This speeds and streamlines construction trade scheduling.

The underlayment is the perfect choice for the Wilderness-Wyndham condominiums because of how the buildings are being erected. Each building is being constructed one side at a time. That is, one side – a full six stories – is erected and roofed in, and then work commences on the building's other half. Because Laxton can pour an entire half-floor every two to three weeks, his crew can stay ahead of schedule and not worry about the elements.

Nothing can compete with the Great Smoky Mountains for beauty and awe. But the work underway at Wilderness at the Smokies is impressive nonetheless. The project is proceeding on schedule, thanks in large part to the floor underlayments used there.

"The GCs are pleased," Laxton points out proudly. "They're pushing everybody, which is no problem for me. They can't give me the floors fast enough."

