



CGC SYNKO® BRAND SPAN-TEXTURE NON-AGGREGATED WALL AND CEILING TEXTURE

DATA SHEET



FOR A VARIETY A TEXTURE FINISHES

- For use over gypsum panels, plaster or concrete
- Spray or hand application
- Hard, durable texture finish
- Easy mixing



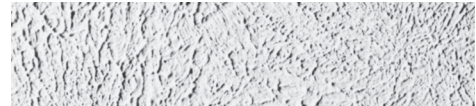
ORANGE PEEL



SPATTER



SPATTER/KNOCKDOWN



CROWS FOOT



STIPPLE



SWIRL

DESCRIPTION

CGC Synko® Brand Span-Texture Non-Aggregated Ceiling Texture is a powder product formulated to add durability as well as beauty to any interior wall or ceiling. Mixed with water at job site. It provides good pumpability for fast, easy spray application. Bonds to new or old concrete, gypsum panels and plaster. Masks minor surface defects and has superior resistance to fissure cracking in recommended thicknesses. Dries to a crisp white finish that usually is left unpainted, but may be overpainted if desired. For wall applications should be overpainted.

ADVANTAGES

SAVES TIME AND MONEY: Low cost spray application reduces job time, allows earlier occupancy, providing faster return on investment. Easy to mix.

DECORATES AND CONCEALS: High-hide texture brightens rooms and can be painted to match any decorating scheme. Also conceals most minor surface imperfections.

LIMITATIONS

1. Application below grade or in high-humidity areas is not recommended.
2. Application of heavy water-based textures may result in sagging of gypsum board ceilings under the following conditions: high-humidity, improper ventilation and/or board application to framing and insufficient thickness for span between supports. When using water-based textures, refer to the following table:

GYPSUM BOARD THICKNESS		APPLICATION METHOD (Long edge relative to frame)	MAXIMUM FRAME SPACING O.C.	
mm	inch		mm	inches
9.5	3/8	Not Recommended	—	—
12.7	1/2	Perpendicular Only	406	16*
15.9	5/8	Perpendicular Only	610	24

Note: Double-layer laminated, 19 mm (3/4") or greater total thickness—610 mm (24") o.c.

*If 12.7 mm (1/2") CGC Sheetrock® Brand UltraLight Interior Ceiling Board is specified, maximum frame spacing is 610 mm (24") o.c.

3. Texture is not washable unpainted. Can be overpainted when dry.



DIRECTIONS

SURFACE PREPARATION

All surfaces, including joint compound applications or patching treatments, shall be dry, clean and sound. Remove any water-soluble materials from surface. Dull or roughen any gloss surfaces. Prime all metal surfaces with a rust inhibitive alkyd primer. Fill and seal any exposed wood surfaces. Product, air and surface temperature must be at a minimum of 13 °C (55 °F) throughout the finishing process, until texture is completely dry.

NEW DRYWALL

Reinforce joints and treat fastener heads with a CGC Synko® joint treatment system. Smooth any scratches or scuffs in drywall surfaces.

NEW CONCRETE/ PLASTER

Allow new concrete ceilings and any new concrete patches or repairs to age at least 60 days. Remove form oils, efflorescence, grease and other deposits from all concrete surfaces. Finish any patched or repaired areas to provide a uniform texture and surface. Grind down any ridges or other protrusions resulting from forms or other causes to the same level as adjacent surfaces; remove all grinding sludge or dust. Fill depressions and surface irregularities with CGC Synko® Brand Concrete Fill. Exercise special care to provide a smooth level surface, free of irregularities, in areas that will be exposed to sharply angled or critical lighting. Concrete should be finished with a coat of CGC Synko® Brand Concrete Seal prior to applying texture.

PAINTED SURFACES

Lightly sand to dull any sheen and develop “tooth” for good bond. Wash surface with a strong detergent from the bottom up to remove any dust, dirt or sheen. A strong solution of TSP (trisodiumphosphate) works best.

Note: Texturing over a previously painted or stained substrate may require application of a stain-blocking sealer to obtain uniform colour (check manufacturer’s instructions for stain containment). Prevent rust stains by spot priming bare metal with a good rust inhibitive primer and let dry prior to the full surface priming

SUBSTRATE PRINTING

Application of a prime coat is necessary to equalize surface porosity. When all surfaces are prepared and dry, apply a full coat of a CGC Synko® Primer or Primer-Sealer, or a good quality interior flat latex paint with high-solids content. Prime coat should be applied undiluted and allowed to dry before decorating.

MIXING

Use clean mixing vessel equipped with a variable speed agitator. Sift each bag of finish into approximately 6 litres of clean drinkable water. Agitate while adding powder. Mix thoroughly until lump free, let soak for 10 minutes, longer if water and powder are cold. Stir again before use; adjust to spray consistency by adding small amount of water to the maximum recommended. Over-thinning will cause poor bond, poor hide, texture variation and discolouration. Do not intermix with other products.

OPTIONAL MIXING

Adding paint to ceiling texture: if better hide, improved surface hardness, wider spray fan and faster spray application are desired. A good grade polyvinyl acetate, vinyl acrylic or other water-thinned paints in a flat grade can be added. White, off white or pastel colours only are suitable. Compatibility of paints to be used with CGC Synko® Brand Span-Texture Non-Aggregated Ceiling Texture should be checked with paint manufacturer before use.

Up to 3 litres of paint may be added to texture wet mix by substituting paint for water. Over-thinning by adding paint to fully diluted mix should be avoided. Surface priming recommendations still apply.

APPLICATION

Use a spray gun, pump and air compressor of appropriate size to match the size of the area to be textured. Hopper guns may be appropriate for small jobs or a single application. Piston and/or roto stator-type pumps can be used. Mask and protect interior areas not designated for texture applications from texture overspray. Keep pressure as low as possible. Correct equipment settings and mix consistency will balance the coverage rate, minimize aggregate bounce-back, control spray fan width and facilitate complete board surface coverage. Maintaining the coverage rate within the optimal range will prevent cracking, lack of hide and bond problems. Remove overspray from walls or other surfaces as soon as possible.

DECORATION

For final decoration, apply paint, following manufacturer’s directions.

CLEAN-UP

Wash all equipment immediately after use with water or water containing a mild detergent.



PRODUCT DATA

Colour	White
Dilution	Up to 6-1/2 litres of water per bag
Drying Time	Dries to touch in 30 to 60 minutes at 25 °C (77 °F)/50% RH. Let dry completely before recoating
Coverage	For lightly sprayed texture from 28 to 37 m ² (300 to 400 ft. ²) per bag. For heavy sprayed texture from 9 to 23 m ² (100 to 250 ft. ²) per bag. Actual coverage can vary depending on factors such as substrate surface condition, product dilution, spray techniques, procedures and coating uniformity and thickness.
Surface Burning Characteristics	Tested in accordance with CAN/ULC S102 M. Flame Spread 5, Smoke development 0 (Material applied min. 3 mm thick over primed gypsum board).
Shelf Life	Up to nine months under good storage conditions
Storage	Close opened bags as airtight as possible and store in a dry place. Protect from the elements and freezing.
Packaging	CGC Synko® Brand Span-Texture Non-Aggregated Ceiling Texture, 10 kg bag

PRODUCT INFORMATION

See cgcinc.com for the most up-to-date product information.

WARNING

Spraying mist or dust created from product may cause eye, skin, nose, throat, or upper respiratory irritation. Coating VOC = less than 55 g/L. Avoid inhalation of mist or dust. Use in a well-ventilated area. Wear a NIOSH/MSHA approved respirator when dusty, misty, or if spray applying. Use proper ventilation to reduce mist/dust exposure. Prolonged and repeated exposure to respirable

crystalline silica may cause lung disease. Wear eye protection. If eye contact occurs, immediately flush thoroughly with water for 15 minutes. If irritation persists, call physician. Wear long sleeved work clothing to prevent skin irritation. Wash thoroughly with soap and water after use. Do not ingest. If ingested, call physician.

KEEP OUT OF REACH OF CHILDREN.

TRADEMARKS

The trademarks CGC, SHEETROCK, SYNKO, THE CGC LOGO, and related marks are

trademarks of USG Corporation or its subsidiaries or its affiliates.

NOTE

Products described here may not be available in all geographic markets. Consult your CGC Inc. sales office or representative for information.

NOTICE

We shall not be liable for incidental and consequential damages, directly or indirectly sustained, nor for any loss caused by application of these goods not in accordance with current printed instructions or for other than the intended use.

Our liability is expressly limited to replacement of defective goods. Any claim shall be deemed waived unless made in writing to us within thirty (30) days from date it was or reasonably should have been discovered.

SAFETY FIRST!

Follow good safety/industrial hygiene practices during installation. Wear appropriate personal protective equipment. Read MSDS and literature before specification and installation.

