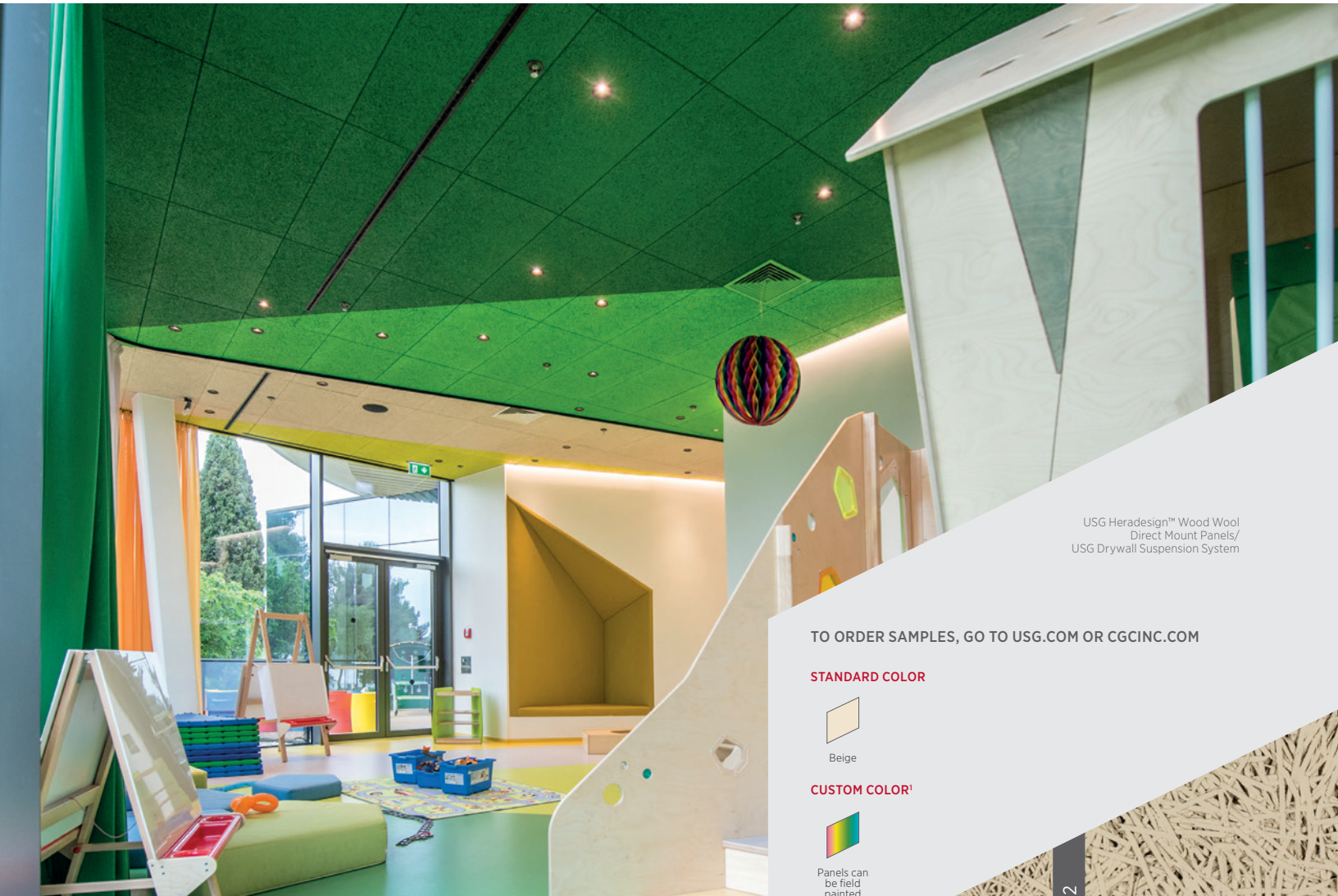


USG HERADESIGN™ WOOD WOOL PANELS

DIRECT MOUNT WALL & CEILING PANELS



USG Heradesign™ Wood Wool
Direct Mount Panels/
USG Drywall Suspension System

TO ORDER SAMPLES, GO TO USG.COM OR CGCINC.COM

STANDARD COLOR



Beige

CUSTOM COLOR¹



Panels can
be field
painted

FEATURES AND BENEFITS

- Available in two textures to meet design needs.
- Can be field painted for an almost unlimited range of colors.
- Excellent noise absorption – NRC up to 0.90 (C-40 Mounting).
- Durable and sustainable option for retrofits to improve acoustical performance.
- Can be applied to common surfaces such as wood, drywall, masonry or steel.

APPLICATIONS

- Offices and Conference Rooms
- Gymnasiums and Recreational Areas
- Education
- Auditoriums
- Retrofits
- Restaurants
- Retail Spaces

SUBSTRATE

- Magnesite-bonded Wood Wool

HERADESIGN 1

HERADESIGN 2

USG HERADESIGN™ WOOD WOOL PANELS

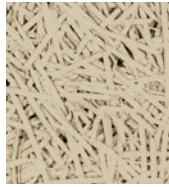
DIRECT MOUNT WALL & CEILING PANELS



HERADESIGN 1
(Super Fine)



HERADESIGN 2
(Fine)



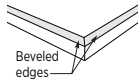
Edge	Panel Size	Fire Rating	Item No.	Color
BEV/BEV	2'x4'x1" 2'x8'x1"	Class A Class A	HDMSF124B HDMSF128B	Beige Beige
BEV/SQ	2'x8'x5/8" 2'x4'x1" 2'x8'x1"	Class A Class A Class A	HDMSF5828 HDMSF124 HDMSF128	Beige Beige Beige
BEV/BEV	2'x4'x1" 2'x8'x1"	Class A Class A	HDMF124B HDMF128B	Beige Beige
BEV/SQ	2'x4'x1" 2'x8'x1"	Class A Class A	HDMF124 HDMF128	Beige Beige

HERADESIGN 1
(Super Fine Texture)

HERADESIGN 2
(Fine Texture)

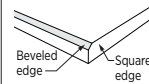
EDGE DETAILS

BEV/BEV



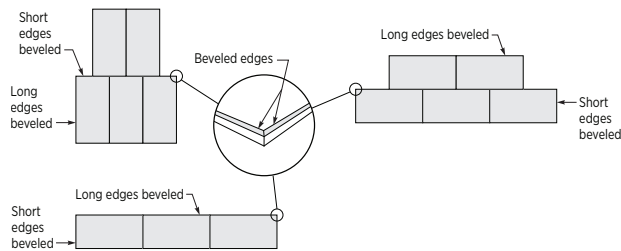
Note: The BEV/BEV edge panels are recommended for installations with adjoining panels.

BEV/SQ



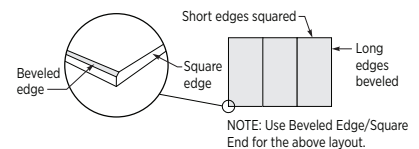
RECOMMENDED EDGE DETAILS

BEV/BEV Edge Patterns



NOTE: Use Beveled Edge/Beveled End panels for all adjoining panel installations.

BEV/SQ Edge Patterns



NOTE: Use Beveled Edge/Square End for the above layout.

USG HERADESIGN™ WOOD WOOL PANELS
DIRECT MOUNT WALL & CEILING PANELS

ACOUSTICAL
PERFORMANCE²

NRC as per ASTM C423	Mounting A	Mounting D-20	Mounting C-20	Mounting C-40
HERADESIGN 1	0.55	0.55	0.80	0.90
HERADESIGN 2	0.50	0.55	0.75	0.85

MOUNTING METHODS

Mounting A

Installed Directly on a Wall or Ceiling Surface

Mounting D-20

Installed on 3/4" Furring Strips

Mounting C-20

Installed on 3/4" Furring Strips

Mounting C-40

Installed on 1-1/2" Furring Strips

Mounting DWSS

Low Emissions (VOC)
CDPH 01350 v1.2-2017 compliance on select finishes, see usg.ecomedes.com for more details and documentation.

PHYSICAL DATA

Additional Documents and Resources
Data Sheet: SC3260
Installation Guide: SC3261

ASTM E1264 Classification
ASTM E1264-22 Type XIV, Pattern L
ASTM E1264-23 Type E, Pattern L

Fire Classification
ASTM E84 and CAN/ULC S102
surface-burning characteristics
Class A
Flame spread: 25 or less
Smoke developed: 50 or less

Online Tools
usgdesignstudio.com, cgcdesignstudio.com or usg.ecomedes.com

Maintenance
Can be cleaned easily with a soft brush or vacuum.

Field Painting
Field painting multiple times is acceptable with Heradesign. For more detail please see *USG Heradesign Installation Guide* SC3261.

Weight
HERADESIGN 1
1.60 lb. / sq. ft. (5/8")
2.31 lb. / sq. ft. (1")

HERADESIGN 2
1.68 lb. / sq. ft. (5/8")
2.53 lb. / sq. ft. (1")

Installation Considerations
Ensure panels are mechanically fastened to approved surface/substrate. Panels are to be installed in an ashlar pattern (staggered end joints). Use caution and wear appropriate hand, eye, and dust mask protection when cutting and installing USG Heradesign panels. Refer to *USG Heradesign Installation Guide* SC3261 for more details. Heradesign panels are not suitable for pools or exterior applications.

Design Considerations
For walls that may experience condensation or moisture, such as uninsulated exterior walls, D or C mounting is required to create a gap between the structure and the panel.

Visual Consideration
Color and pattern variation is common across panels due to the natural characteristics of wood.

Notes
1. Given the potential variation of the wood fibers used in Heradesign panels, USG Standard, Advantage or Premium colors will coordinate only and exact matches are not possible. Please compare samples with USG color chips to find best coordinating color.
2. Acoustical performance is representative of 1" thick product.

Notice
The information in this document is subject to change without notice. CGC Inc. or USG Corp. assumes no responsibility for any errors that may inadvertently appear in this document.