

USG HERADESIGN™ WOOD WOOL PANELS

LAY-IN CEILING PANELS



USG Heradesign™ Wood Wool Panels/
USG Donn® Brand Acoustical
Suspension System

TO ORDER SAMPLES, GO TO USG.COM OR CGCINC.COM

STANDARD COLOR



Beige

CUSTOM COLOR¹



Panels can
be field
painted

FEATURES AND BENEFITS

- Available in two textures to meet design needs.
- Can be field painted for an almost unlimited range of colors.
- Excellent noise absorption – NRC up to 0.85.
- Durable and sustainable option for retrofits to improve acoustical performance.

APPLICATIONS

- Offices and Conference Rooms
- Gymnasiums and Recreational Areas
- Education
- Auditoriums
- Restaurants
- Retail Spaces

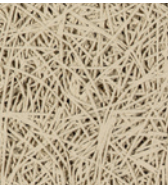
HERADESIGN 1

HERADESIGN 2

USG HERADESIGN™ WOOD WOOL PANELS
LAY-IN CEILING PANELS



HERADESIGN 1
(Super Fine)



HERADESIGN 2
(Fine)



Edge	Panel Size	Fire Rating	Item No.	Color
SQ	2'x2'x1"	Class A	HLSF122SQ	Beige
	2'x4'x1"	Class A	HLSF124SQ	Beige
SL	2'x2'x1"	Class A	HLSF122SL	Beige
	2'x4'x1"	Class A	HLSF124SL	Beige
SQ	2'x2'x1"	Class A	HLF122SQ	Beige
	2'x4'x1"	Class A	HLF124SQ	Beige
SL	2'x2'x1"	Class A	HLF122SL	Beige
	2'x4'x1"	Class A	HLF124SL	Beige

HERADESIGN 1
(Super Fine Texture)

HERADESIGN 2
(Fine Texture)

GRID PROFILE OPTIONS

Square Edge Panels - SQ

USG DX®

USG DXW™

Shadowline Edge Panels - SL

USG DX®

ACOUSTICAL
PERFORMANCE²

NRC as per ASTM C423		
	No Infill Panel	Infill Panel; Item No. 22421
HERADESIGN 1	0.55	0.85
HERADESIGN 2	0.55	0.75



ORDER SAMPLES/LITERATURE
USG: usg.com or samplitt@usg.com
CGC: contact.Sales.Representative

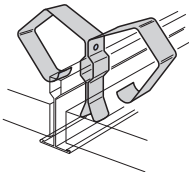
TECHNICAL SERVICES
800 USG.4YOU (874-4968)

FOR MOST UP-TO-DATE TECHNICAL INFORMATION AND LEED REPORT TOOL
usgdesignstudio.com
cgcdesignstudio.com
usg.ecomedes.com

USG HERADESIGN™ WOOD WOOL PANELS


LAY-IN CEILING PANELS

Accessories



Panel Retention Clip 20428

Attaches to main tees and cross tees behind lay-in panels. The retention clip helps prevent panel displacement from incidental contact. Recommended with USG Heradesign panels in areas where contact is possible such as gymnasiums and educational applications.

 **Low Emissions (VOC)**
CDPH 01350 v1.2-2017 compliance on select finishes, see usg.ecomedes.com for more details and documentation.

PHYSICAL DATA

Additional Documents and Resources Data Sheet: SC3259 Installation Guide: SC3261	Maintenance Can be cleaned easily with a soft brush or vacuum.	Installation Considerations Use caution and wear protective clothing and eye protection. Only install in a well ventilated area. For detailed instructions reference <i>USG Heradesign Installation Guide</i> SC2361. Heradesign panels are not recommended for use in pools or exterior applications.
ASTM E1264 Classification ASTM E1264-22 Type XIV, Pattern L ASTM E1264-23 Type E, Pattern L	Visual Consideration Color and pattern variation is common across panels due to the natural characteristics of wood.	Notes 1. Given the potential variation of the wood fibers used in Heradesign panels, USG Standard, Advantage or Premium colors will coordinate only and exact matches are not possible. Please compare samples with USG color chips to find best coordinating color. 2. Acoustical test results are representative of 1" thick product.
Fire Classification ASTM E84 and CAN/ULC S102 surface-burning characteristics Class A Flame spread: 25 or less Smoke developed: 50 or less	Field Painting Field painting multiple times is acceptable with Heradesign. For more detail please see <i>USG Heradesign Installation Guide</i> SC3261.	
Online Tools usgdesignstudio.com , cgcdesignstudio.com or usg.ecomedes.com	Weight HERADESIGN 1 2.31 lb. / sq. ft. (1") HERADESIGN 2 2.53 lb. / sq. ft. (1")	

Notice
The information in this document is subject to change without notice. CGC Inc. or USG Corp. assumes no responsibility for any errors that may inadvertently appear in this document.

SC3259/rev. 7-24
© 2024 USG Corporation and/or its affiliates. All rights reserved. Printed in USA

Manufactured by
Knauf AMF Ges. m.b.H.
Ferdorf 29
9702 Ferdorf, Austria

The trademarks USG, CGC, DONN, DX, DXW, IT'S YOUR WORLD. BUILD IT., the USG and CGC logos, the design elements and colors, and related marks are trademarks of USG Corporation or its affiliates.

HERADESIGN is a trademark of Knauf AMF GmbH & Co. Manufactured by Knauf AMF GmbH in Ferdorf, Austria.

Safety First! Follow good safety/industrial hygiene practices during installation. Wear appropriate personal protective equipment. Read SDS and literature before specification and installation.

