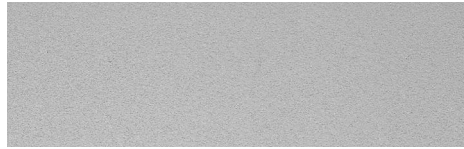


SHEETROCK® Wall and Ceiling Spray Texture



For a variety of light, appealing textures in interiors.

- For use over gypsum panels or concrete.
- Superior open time for hand-tooled knockdown finishes.
- Excellent surface relief (standout).
- Low shrinkage formula.



Orange Peel



Spatter



Spatter/Knockdown

Description

SHEETROCK® Wall and Ceiling Spray Texture is a vinyl formulation for texturing interior, above-grade surfaces. Ideal where moderate to bold texture patterns are desired. Designed for spray application over gypsum panel, concrete, and most other interior wall and ceiling surfaces. Formulated to create unique texture patterns such as spatter, spatter/knockdown, and orange peel designs. Dries to a white surface but should be overpainted when dry. Not washable unpainted.

Limitations

1. Application below grade or in high-humidity areas is not recommended.
2. Heavy water-based textures may result in sagging of gypsum board ceilings under these conditions: high humidity, improper ventilation and/or board application to framing and insufficient board thickness for span between supports. When using water-based textures, refer to the following table:

Board Thickness		Application Method (Long edge relative to frame)	Maximum Frame Spacing o.c.	
inch	mm		inches	mm
3/8	9.5	Not Recommended	—	—
1/2	12.7	Perpendicular Only	16*	406
5/8	15.9	Perpendicular Only	24	610

Note: Double layer laminated. 3/4" or greater total thickness—24" o.c.

*If 1/2" SHEETROCK® brand Interior Gypsum Ceiling Board is specified, maximum frame spacing is 24" o.c.

3. Texture is not washable unpainted. Should be overpainted when dry.

Directions

Preparation

Surface must be dry, clean, sound, and free of oil, grease, and efflorescence. Dull glossy surfaces; prime metal with a good rust-inhibitive primer. Concrete should be fully cured (at least 60 days after pouring). Grind plane differences and remove grinding dust and sludge. Fill and level with SHEETROCK® Setting-Type (DURABOND®) or SHEETROCK® Lightweight Setting-Type (EASY SAND™) Joint Compound. Reinforce and conceal drywall joints using SHEETROCK® Joint Tape and a United States Gypsum Company joint compound. Fill all fastener depressions with joint compound. Smooth surface scratches and scuffs. Correct plane irregularities, as these are accentuated by sharp, angular lighting. When prepared surfaces are dry and free of dust, apply SHEETROCK® First Coat or a prime coat of good quality white interior latex flat wall paint with high solids content. Paint should be applied undiluted and allowed to dry before texturing. Note: Application of a prime coat is to equalize the surface porosity and to provide a uniform color. Primers are not intended to reduce sag potential or to prevent migratory stains or contaminants from leaching to the finished surface.

Mixing

Use heavy-duty drill fitted with a suitable mixing paddle; operate at not over 400 rpm. Excessive or high-speed mixing may produce voids in finished appearance. Thinning of texture with water will vary considerably, depending on the finished appearance desired and method of application to be employed. Mix until consistency is smooth and uniform. Do not mix with other materials in wet or dry form.

Applicator should experiment with some of the mixed material prior to use, then adjust water proportions to suit the job. Over-thinning may cause poor bond, pinholes, and cracking.

- For orange peel pattern, add up to 0.75 gal. (2.85 L) of water per 50 lbs. (22.7 kg) of texture.
- For spatter and spatter/knockdown patterns: add up to 0.5 gal. (1.9 L) of water per 50 lbs. (22.7 kg) texture.

Coverage	Use 300-700 sq. ft. per 50 lbs. (22.7 kg) as an estimated coverage rate. Actual coverage will vary depending on factors such as the type of texture design, the condition of the substrate surface, the amount of dilution of the product, application technique, and the uniformity of the coating.
Application	Texture must be evenly spread and free from runs, sags, and other blemishes. Allow texture to dry before applying paint. Maintain minimum air, texture material, and surface temperature of 55 °F (13 °C) within working area until texture is completely dry.
Decoration	This product is not washable unpainted and is not recommended as the final decoration. For final decoration, apply paint following manufacturer's directions.
Cleanup and Storage	Wash all equipment immediately after use with water containing household detergent. Protect container and contents from exposure to weather. Store at moderate temperatures, avoiding extreme heat, freezing, and direct sunlight.

Product Data	Color:	White. Not washable unpainted.
	Tinting:	Not recommended. Overpaint when dry.
	Shelf Life:	Up to 9 months under protected storage conditions.
	Packaging:	3.5 gal. (13.2 L) carton.

Submittal Approvals:	Job Name	
	Contractor	Date
<p>WARNING Spraying mist or dust created from product may cause eye, skin, nose, throat, or respiratory irritation. Avoid inhalation of mist or dust. Wear a NIOSH/MSHA-approved respirator when dusty or misty or if spray applying. Use proper ventilation and/or dust collector to reduce mist/dust exposure. Prolonged and repeated exposure to respirable mica may cause lung disease. Wear eye protection. If eye contact occurs, immediately flush thoroughly with water for 15 minutes. If irritation persists, call physician. Wear long-sleeved work clothing to prevent skin irritation. Wash thoroughly with soap and water after use. Do not ingest. If ingested, call physician. Product safety information: (800) 507-8899. KEEP OUT OF REACH OF CHILDREN.</p>		
<p>Trademarks: The following trademarks used herein are owned by United States Gypsum Company: DURABOND, EASY SAND, SHEETROCK.</p>		
<p>Note: Products described here may not be available in all geographic markets. Consult your U.S. Gypsum Company sales office or representative for information.</p>		
<p>Notice: We shall not be liable for incidental and consequential damages, directly or indirectly sustained, nor for any loss caused by application of these goods not in accordance with current printed instructions or for other than the intended use. Our liability is expressly limited to replacement of defective goods. Any claim shall be deemed waived unless made in writing to us within thirty (30) days from date it was or reasonably should have been discovered.</p>		