

USG  
Gypsum  
Solutions

**USG LEVELROCK® BRAND**

MASS TIMBER BROCHURE





# TABLE OF CONTENTS

THE SUPREME ADVANTAGE..... 3

MASS TIMBER ASSEMBLIES GUIDE..... 4-11

USG LEVELROCK SAM-N SUPREME SERIES SUBMITTAL..... 12-14

USG LEVELROCK FLOOR UNDERLAYMENT SELECTOR CHART.....15

# THE SUPREME ADVANTAGE



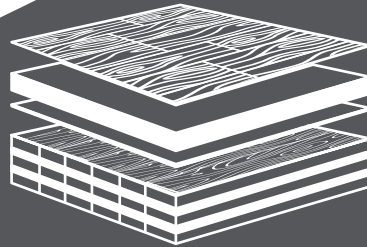
## PRODUCT HIGHLIGHT

USG Levelrock® SAM-N Supreme Series Sound Attenuation Mats are made of lightweight materials designed specifically for mass timber construction. These innovative, low profile mats will meet and exceed even the toughest building code requirements for sound attenuation, certified by third-party testing labs.



LOW PROFILE

LIGHTWEIGHT



DESIGNED FOR **MASS  
TIMBER CONSTRUCTION**



**SUPERIOR SOUND  
PERFORMANCE**



EASY TO INSTALL  
= **COSTS SAVINGS**



# A SUPREME SOUNDSCAPE.

USG has tested hundreds of floor-ceiling assemblies in search of designs that will improve the acoustical performance of mass timber systems. The following is a collection of mass timber assemblies that will meet or exceed STC and IIC requirements.

## 3-ply CLT with 5 mm LVT.....



Confirmed third-party acoustical test performance

**STC = 50**

**IIC = 50**

**USG LEVELROCK® BRAND  
MASS TIMBER ASSEMBLIES**





**CLT with 2 mm LVT & acoustical underlayment .....**



Confirmed third-party acoustical test performance	<b>STC = 56</b>	<b>IIC = 50</b>
---	-----------------	-----------------

**CLT with 5 mm LVT .....**



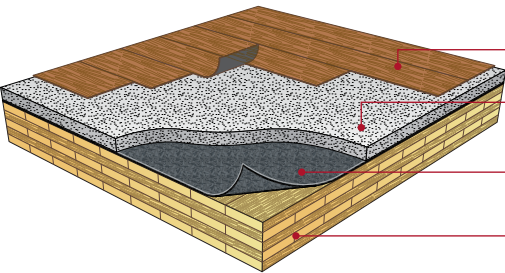
Confirmed third-party acoustical test performance	<b>STC = 56</b>	<b>IIC = 51</b>
---	-----------------	-----------------

**CLT with 6.5 mm LVP .....**



Confirmed third-party acoustical test performance	<b>STC = 56</b>	<b>IIC = 53</b>
---	-----------------	-----------------

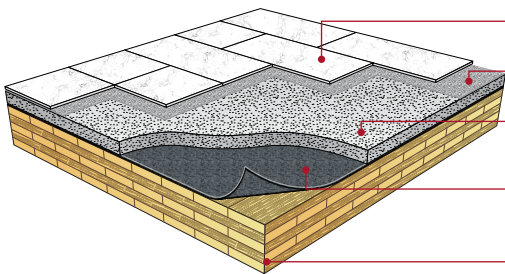
**CLT with 2 mm LVT .....**



- Luxury Vinyl Tile, 2 mm
- USG Levelrock® 2500 Floor Underlayment, 2 in.
- USG Levelrock® SAM-N75™ Supreme Sound Attenuation Mat
- 5-ply CLT

Confirmed third-party acoustical test performance      **STC = 59**      **IIC = 52**

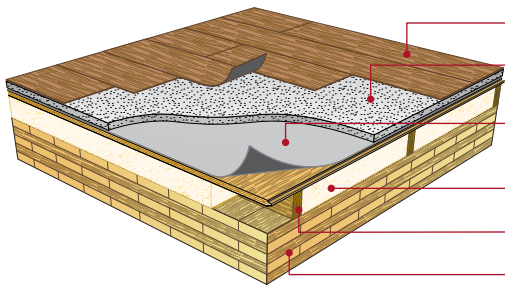
**CLT with Ceramic Tile .....**



- Ceramic Tile, 10.5 mm
- Crack Isolation Membrane, 0.8 mm
- USG Levelrock® 2500 Floor Underlayment, 2 in.
- USG Levelrock® SAM-N25™ Supreme Sound Attenuation Mat
- 5-ply CLT

Confirmed third-party acoustical test performance      **STC = 55**      **IIC = 50**

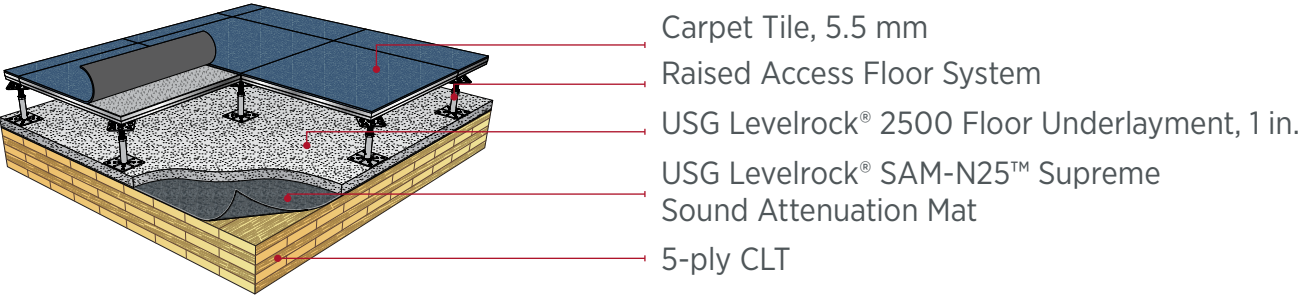
**CLT with a Sleeper System, 2 mm LVT .....**



- Luxury Vinyl Tile, 2 mm
- USG Levelrock® 2500 Floor Underlayment, 1-1/2 in.
- USG Levelrock® SAM-N25™ Ultra Sound Attenuation Mat
- Fiberglass Insulation, 3-1/2 in.
- 2 x 4 Sleepers, 24" o.c.
- 5-ply CLT

Confirmed third-party acoustical test performance      **STC = 58**      **IIC = 53**

**CLT with Raised Access Floor, Carpet Tile .....**



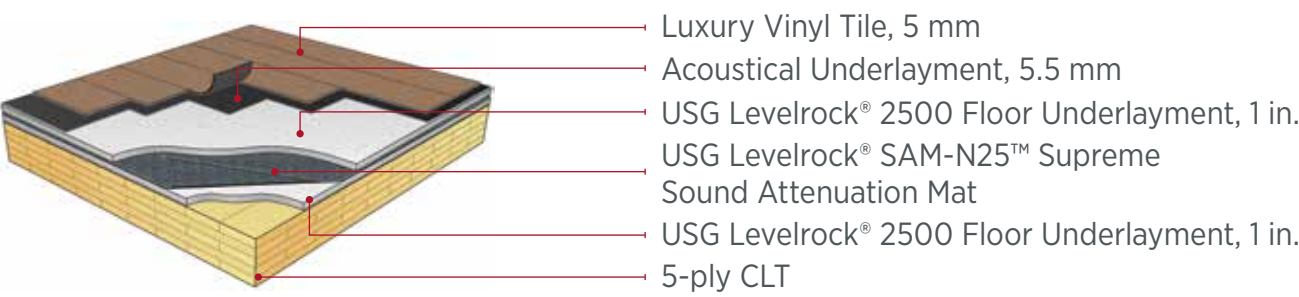
Confirmed third-party acoustical test performance      **STC = 58**      **IIC = 59**

**CLT with Raised Access Floor, 2 mm LVT .....**



Confirmed third-party acoustical test performance      **STC = 59**      **IIC = 53**

**CLT with Double Lift System, 5 mm LVT .....**



Confirmed third-party acoustical test performance      **STC = 57**      **IIC = 54**

**CLT with Conduit .....**





# SOUND DESIGNS FOR CLT

UL Fire Ratings	CLT Type	Raised Floor	Acoustical Underlayment	Ceiling	Min. Depth USG Levelrock® Floor Underlayment	USG Levelrock® Sound Mat	Floor Covering	Sound Rating			
								STC	IIC	HIIC	Sound Test Number
Prescriptive	<b>3-Ply 4.125 in. (105 mm)</b>	n/a	n/a	Exposed	2 in. (51 mm)	<b>SAM-N25™ Supreme 5/16 in. (8 mm)</b>	None	51	41	41	R0062.01-113-11-R0
							Carpet Tile	50	51	62	R0062.05-113-11-R0
							Carpet Tile Felt Backed	50	53	75	R0062.06-113-11-R0
							LVT 2 mm	51	42	44	R0062.07-113-11-R0
							LVT 4.4 mm	51	46	56	R0062.04-113-11-R0
							LVT 5 mm	51	45	50	R0062.08-113-11-R0
							LVT 5 mm Backed	51	47	60	R0062.12-113-11-R0
	<b>3-Ply 4.125 in. (105 mm)</b>	n/a	3/16 in. (5 mm) topical mat	Exposed	2 in. (51 mm)	<b>SAM-N25™ Supreme 5/16 in. (8 mm)</b>	LVT 2 mm	50	47	57	R0062.02-113-11-R0
							LVT 5 mm	50	50	60	R0062.03-113-11-R0
	<b>3-Ply 4.125 in. (105 mm)</b>	n/a	n/a	USG Drywall Suspension System (DWSS) with 3-1/2 in. (89 mm) of fi- berglass insulation and 1 layer 5/8 in. (15.9 mm) Type X	1 in. (25.4 mm)	<b>SAM-N25™ 1/4 in. (6.4 mm)</b>	None	59	59		K8179.01-113-11-r0
							Carpet & Pad	59	85		K8179.04-113-11-r0
							Engineered Hardwood	59	61		K8179.03-113-11-r0
							LVT 5.5 mm	58	61		K8179.02-113-11-r0
							Ceramic Tile <sup>(a)</sup>	59	63		K8179.05-113-11-r0
	<b>3-Ply 4.125 in. (105 mm)</b>	n/a	n/a	USG Drywall Suspension System (DWSS) with 3-1/2 in. (89 mm) of fi- berglass insulation and 1 layer 5/8 in. (15.9 mm) Type X	1 in. (25.4 mm)	<b>SAM-N25™ Ultra 5/16 in. (7.9 mm)</b>	None	59	64		K8179.01-113-11-r0
							Carpet & Pad	59	88		K8179.04-113-11-r0
							Engineered Hardwood	59	64		K8179.03-113-11-r0
							LVT 5.5 mm	58	62		K8179.02-113-11-r0
							Ceramic Tile <sup>(a)</sup>	59	67		K8179.05-113-11-r0
	<b>3-Ply 4.125 in. (105 mm)</b>	n/a	n/a	n/a	2 in. (51 mm)	<b>SAM-N75™ Supreme 3/4 in. (18 mm)</b>	None	55	45	46	S0320.01
							Carpet Tile	56	55	79	S0320.07
							LVT 2 mm	56	47	50	S0320.02
							LVT 4 mm w/ integrated pad	55	50	58	S0320.05
							LVT 5 mm	57	49	52	S0320.02
							LVT 5 mm w/ integrated pad	56	51	65	S0320.11
	<b>3-Ply 4.125 in. (105 mm)</b>	n/a	3/16 in. (5 mm) topical mat	n/a	2 in. (51 mm)	<b>SAM-N75™ Supreme 3/4 in. (18 mm)</b>	LVT 5 mm	55	52	62	S0320.04

**Note** (a) Ceramic tile was tested with a crack isolation membrane.

# SOUND DESIGNS FOR CLT (CONT.)

UL Fire Ratings	CLT Type	Raised Floor	Acoustical Underlayment	Ceiling	Min. Depth USG Levelrock® Floor Underlayment	USG Levelrock® Sound Mat	Floor Covering	Sound Rating			
								STC	IIC	HIIC	Sound Test Number
Prescriptive	5-Ply 6.89 in. (175 mm)	n/a	n/a	Exposed	2 in. (51 mm)	SAM-N25™ Supreme 5/16 in. (8 mm)	Engineered Hardwood	56	50	56	N7706.04-113-11-R0
							LVT 5 mm	56	51	65	P0087.02-113-11-R0
							LVT 6.5 mm	56	53	67	N7706.03-113-11-R0
							Ceramic Tile <sup>(a)</sup>	55	50	54	N7706.06-113-11-R0
	5-Ply 6.89 in. (175 mm)	n/a	1.4 mm topical mat	Exposed	2 in. (51 mm)	SAM-N25™ Supreme 5/16 in. (8 mm)	LVT 2 mm	56	50	63	P0087.03-113-11-R0
	5-Ply 6.89 in. (175 mm)	n/a	n/a	Exposed	2 in. (51 mm)	SAM-N25™ Supreme <sup>(b)</sup> 5/16 in. (8 mm)	None	56	49	50	R0061.01-113-11-R0
							Carpet Tile	58	53	73	R0061.06-113-11-R0
							Carpet Tile Felt Back	56	55	87	R0061.07-113-11-R0
							LVT 2 mm	57	52	55	R0061.08-113-11-R0
							LVT 4.4 mm	57	53	67	R0061.04-113-11-R0
	5-Ply 6.89 in. (175 mm)	n/a	3/16 in. (5 mm) topical mat	Exposed	2 in. (51 mm)	SAM-N25™ Supreme <sup>(b)</sup> 5/16 in. (8 mm)	LVT 2 mm	57	53	68	R0061.02-113-11-R0
							LVT 5 mm	57	54	70	R0061.03-113-11-R0
	5-Ply 6.89 in. (175 mm)	Raised Access Floor (254 mm)	n/a	Exposed	1 in. (25.4 mm)	SAM-N25™ Supreme 5/16 in. (8 mm)	None	56	52	58	Q2032.01-113-11-R0
							Carpet Tile	58	59	85	Q2032.03-113-11-R0
							LVT 2 mm	59	53	61	Q2032.02-113-11-R0
	5-Ply 6.89 in. (175 mm)	Raised Access Floor (254 mm)	n/a	Exposed	2 in. (51 mm)	SAM-N25™ Supreme 5/16 in. (8 mm)	LVT 2 mm	59	54	61	Q2032.02-113-11-R0
	5-Ply 6.89 in. (175 mm)	2" x 4" Sleepers, 24 in. o.c. with 3/4 in. T&G and 3-1/2 in. (89 mm) fiberglass insulation	n/a	Exposed	1 in. (25.4 mm)	SAM-N25™ 1/4 in. (6.4 mm)	Carpet & Pad	56	72		J9383.05-113-11-R0
							Engineered Hardwood	55	50		J9383.04-113-11-R0
							LVT 6.5 mm	55	50		J9383.03-113-11-R0
							Ceramic Tile <sup>(a)</sup>	56	50		J9383.06-113-11-R0
	5-Ply 7.48 in. (190 mm)	2" x 4" Sleepers, 24 in. o.c. with 3/4 in. T&G and 3-1/2 in. (89 mm) fiberglass insulation	n/a	Exposed	1-1/2 in. (38.1 mm)	SAM-N25™ Ultra 5/16 in. (7.9 mm)	LVT 2 mm	58	53	55	FC22-0444
							LVT 6.5 mm	58	54	63	FC22-0448R1
	5-Ply 6.89 in. (175 mm)	n/a	n/a	USG Drywall Suspension System (DWSS) with 3-1/2 in. (89 mm) of fi- berglass insulation and 1 layer 5/8 in. (15.9 mm) Type X	2 in. (51 mm)	SAM-N25™ 1/4 in. (6.4 mm)	None	63	59		I5203.13-113-11-R0
							Engineered Hardwood	62	64		I5203.16-113-11-R0
							LVT 5.5 mm	63	63		I5203.14-113-11-R0
							LVT 6.5 mm	63	63		I5203.15-113-11-R0
							Ceramic Tile <sup>(a)</sup>	63	65		I5203.17-113-11-R0
	5-Ply 6.89 in. (175 mm)	n/a	n/a	Exposed	2 in. (51 mm)	SAM-N75™ Supreme 3/4 in. (18 mm)	None	60	50	52	r5008.01-113-11-r0
							LVT 2 mm	59	52	56	r5008.02-113-11-r0
							LVT 4.4 mm	58	53	66	r5008.07-113-11-r0
	5-Ply 6.89 in. (175 mm)	n/a	2/25 in. (2 mm) topical mat	Exposed	2 in. (51 mm)	SAM-N75™ Supreme 3/4 in. (18 mm)	LVT 2 mm	59	53	61	r5008.03-113-11-r0
							LVT 5 mm	60	54	64	r5008.05-113-11-r0
	5-Ply 6.89 in. (175 mm)	n/a	3/16 in. (5 mm) topical mat	Exposed	2 in. (51 mm)	SAM-N75™ Supreme 3/4 in. (18 mm)	LVT 2 mm	59	55	69	r5008.04-113-11-r0
							LVT 5 mm	59	55	70	r5008.06-113-11-r0

## Notes

(a) Ceramic tile was tested with a crack isolation membrane.

(b) Minimum depth of Levelrock 2500 was achieved in two separate pours (lifts) with SAM-N25 Supreme Sound Attenuation Mat installed in between.

# SOUND DESIGNS FOR MPP

UL Fire Ratings	MPP Type	Raised Floor	Acoustical Underlayment	Ceiling	Min. Depth USG Levelrock® Floor Underlayment	USG Levelrock® Sound Mat	Floor Covering	Sound Rating			
								STC	IIC	HIIC	Sound Test Number
Prescriptive	4 in. (102 mm)	n/a	n/a	Exposed	2 in. (51 mm)	SAM-N75™ Supreme 3/4 in. (18 mm)	LVT 4.4 mm <sup>(a)</sup>	55	51	58	S0321.05
							Carpet tile	55	55	63	S0321.06
							Carpet tile <sup>(b)</sup>	53	58	78	S0321.07
	4 in. (102 mm)	n/a	3/16 in. (5 mm) topical mat	Exposed	2 in. (51 mm)	SAM-N75™ Supreme 3/4 in. (18 mm)	LVT 5 mm	54	53	61	S0321.04
	5 in. (127 mm)	n/a	n/a	USG Drywall Suspension System (DWSS) with 3-1/2 in. (89 mm) of fi- berglass insulation and 1 layer 5/8 in. (15.9 mm) Type X	1 in. (25.4 mm)	SAM-N25™ 1/4 in. (6.4 mm)	None	62	55		J9380.01-113-11-R0
							Carpet & Pad	61	86		J9380.05-113-11-R0
							Engineered Hardwood	61	59		J9380.04-113-11-R0
							LVT 5.5 mm	61	57		J9380.02-113-11-R0
							LVT 6.8 mm	62	59		J9380.03-113-11-R0
							Ceramic Tile <sup>(c)</sup>	62	61		J9380.06-113-11-R0
	5 in. (127 mm)	n/a	n/a	USG Drywall Suspension System (DWSS) with 3-1/2 in. (89 mm) of fi- berglass insulation and 1 layer 5/8 in. (15.9 mm) Type X	1 in. (25.4 mm)	SAM-N25™ Ultra 5/16 in. (7.9 mm)	None	62	59		J9380.01-113-11-R0
							Carpet & Pad	61	87		J9380.05-113-11-R0
							Engineered Hardwood	61	62		J9380.04-113-11-R0
							LVT 5.5 mm	61	61		J9380.02-113-11-R0
							LVT 6.8 mm	62	61		J9380.03-113-11-R0
							Ceramic Tile <sup>(c)</sup>	62	63		J9380.06-113-11-R0

## Notes

- (a) LVT with integrated pad.
- (b) Carpet tile with felt backing.
- (c) Ceramic tile was tested with a crack isolation membrane.

# SOUND DESIGNS FOR DLT

UL Fire Ratings	DLT Type	Raised Floor	Acoustical Underlayment	Ceiling	Min. Depth USG Levelrock® Floor Underlayment	USG Levelrock® Sound Mat	Floor Covering	Sound Rating			
								STC	IIC	HIIC	Sound Test Number
Prescriptive	6 in. (152 mm)	n/a	n/a	Exposed	2 in. (51 mm)	SAM-N75™ Supreme 3/4 in. (18 mm)	None	57	49	49	S2555.01
							LVT 2 mm	57	50	52	S2555.02
							LVT 4 mm <sup>(a)</sup>	57	51	58	S2555.03
							LVT 5 mm	57	53	66	S2555.07
							Carpet tile	57	53	66	S2555.05
							Carpet tile <sup>(b)</sup>	57	55	79	S2555.06
	6 in. (152 mm)	n/a	3/16 in. (5 mm) topical mat	Exposed	2 in. (51 mm)	SAM-N75™ Supreme 3/4 in. (18 mm)	LVT 5 mm	57	53	63	S2555.04
	6 in. (152 mm)	n/a	7/64 in. (3 mm) topical mat	Exposed	2 in. (51 mm)	SAM-N75™ Supreme 3/4 in. (18 mm)	LVT 5 mm	57	54	70	S2555.08

## Notes

- (a) LVT with integrated pad.
- (b) Carpet tile with felt backing.



# USG LEVELROCK® BRAND SAM-N SUPREME SERIES SOUND ATTENUATION MAT

## Uniquely engineered for mass timber construction

- Two low profile options
- Three layered mat with lightweight glass fibers that provide superior sound absorption
- STC and IIC values exceed code requirements for sound attenuation
- Designed for the demanding sound requirements of mass timber construction, including CLT construction
- Installed by USG Levelrock authorized applicators

## DESCRIPTION

USG Levelrock® Brand SAM-N™ Supreme Series Sound Attenuation Mats are premium sound mats designed to help meet or exceed the most demanding IIC requirements in mass timber construction. They are multi-layered mats featuring uniquely engineered lightweight glass fibers with high acoustical absorption. The low-profile thickness can help address overall floor thickness limitations without having to sacrifice acoustical performance. Each mat profile requires a minimum topping of USG Levelrock® Floor Underlayment. Please refer to the *Product Data* table (pg. 2) for more information.

## LIMITATIONS

1. Do not use in exterior applications.
2. Do not use as a wear surface.
3. Do not use mechanical fasteners to install the sound attenuation mat as mechanical fasteners conduct impact sound, eliminating acoustical isolation.
4. Do not install where continuous exposure to moisture is a possibility.
5. Structure shall be designed so that deflection does not exceed L/240 from combined dead and live loads and L/360 from live loads. Certain floor coverings such as marble, limestone, travertine and wood may have more restrictive deflection limits. Consult the appropriate floor-covering manufacturer.
6. For wood subfloors, do not install on plywood/OSB subfloors lacking tongue and groove edges without back-blocking.

## INSTALLATION

USG Levelrock SAM-N Supreme Series Sound Attenuation Mat can be used over a variety of mass timber types. The subfloor must be clean and free of construction debris and dirt. The building temperature should be maintained at a 50 °F (10 °C) minimum.

USG Levelrock SAM-N Supreme Series Sound Attenuation Mat should be installed with the white fabric side facing up. Priming USG Levelrock SAM-N25 Supreme Sound Attenuation Mat is not required prior to installing USG Levelrock Floor Underlayments provided the sound mat is clean and free from construction debris, dirt and dust.

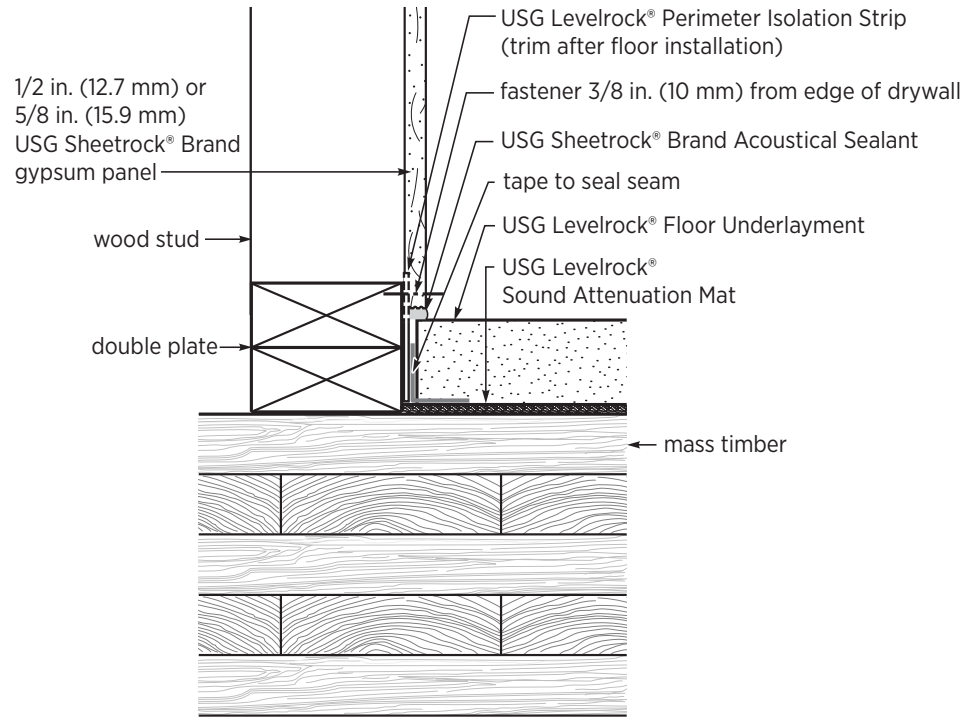
USG Levelrock® Perimeter Isolation Strip must be installed between the sound attenuation mat and walls or floor protrusions. The perimeter isolation strip must be installed so that there is no leakage of USG Levelrock engineered cementitious underlayment as any breach will compromise the sound system performance. Follow the detailed drawings in *Assemblies* (pg. 2) for specific instructions for USG Levelrock SAM-N Supreme Series Sound Attenuation Mat. For further perimeter isolation strip instructions, see *USG Levelrock® Brand Perimeter Isolation Strips Submittal* (IG1874) at [usg.com](http://usg.com).

Protect USG Levelrock underlayment floors poured over sound attenuation mat from heavy trade traffic loads (i.e. loaded drywall carts, heavy tool cabinets, etc.) with plywood.

For further details on installation requirements, specifications and the most up-to-date product information, please see [usg.com](http://usg.com).

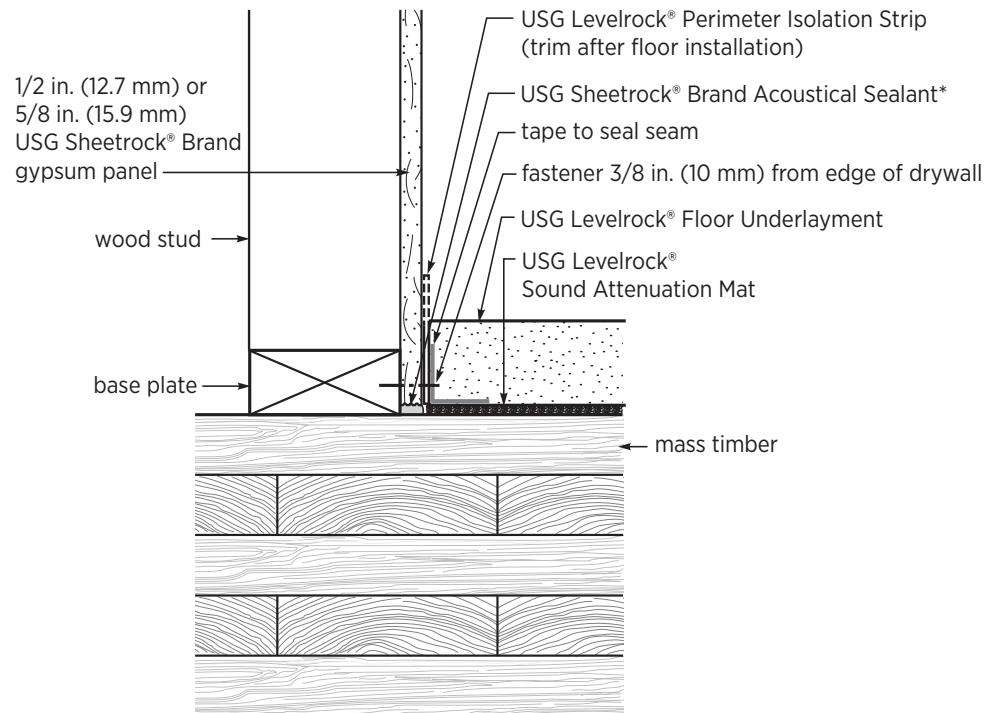
## ASSEMBLIES

### MASS TIMBER, WOOD FRAME— USG LEVELROCK INSTALLED BEFORE DRYWALL



#### USG Levelrock® SAM-N Supreme Series Sound Attenuation Mat

### MASS TIMBER, WOOD FRAME— USG LEVELROCK INSTALLED AFTER DRYWALL



#### USG Levelrock® SAM-N Supreme Series Sound Attenuation Mat

**NOTE** Drawings not to scale.



PRODUCT DATA

	USG Levelrock® SAM-N25™ Supreme	USG Levelrock® SAM-N75™ Supreme
Width	39.5 in. (1 m)	39.5 in. (1 m)
Roll length	100 lf. (30.5 m)	50 lf (15.2 m)
Coverage per roll	330 sq. ft. (30.7 m²)	165 sq. ft. (30.7 m²)
Mat thickness	5/16 in. (8 mm)	23/32 in. (18 mm)
Roll diameter	22 in. (559 mm)	22 in. (559 mm)
Weight per roll	49 lbs. (22 kg)	39 lbs. (18 kg)
Minimum topping of USG Levelrock Floor Underlayment	1 in. (25 mm)	1.5 in. (38 mm)

TEST DATA

SOUND

For fire ratings and IIC and STC sound test data, refer to the *USG Levelrock® Fire & Sound Rating Guide* (IG1685) at usg.com. Published acoustical and durability performance is based on testing USG Levelrock Floor Underlayments with USG Levelrock sound attenuation products.

**Loft Assemblies Without Ceilings** Because loft assemblies vary greatly from job to job, field testing NNIC and NISR tests should be conducted by a licensed acoustician according to ASTM E336 (for NNIC) and ASTM E1007 (for NISR).

EXTENDED WARRANTY

An extended warranty may apply when using USG Levelrock SAM-N Supreme Series Sound Attenuation Mat in a system application. Please contact USG for further details.

SUBMITTAL APPROVALS

Job Name	
Contractor	Date

# USG LEVELROCK® FLOOR UNDERLAYMENT SELECTOR CHART

	USG Levelrock® 2500 Series 2,000 - 3,200 psi (13.8 - 22.1 MPa)	USG Levelrock® 3500 Series 3,500 - 4,500 psi (24.1 - 31.0 MPa)	USG Levelrock® 4500 Series 4,000 - 5,000 psi (27.6 - 34.5 MPa)
<b>SPECIFICATIONS</b>			
MasterSpec	X	X	X
SpecLink	X	X	X
<b>BUILDING TYPE</b>			
Single-Family	X	X	
Multi-Family	X	X	
Light-Commercial	X	X	X
Commercial/Retail/Office			X
Hotel/Motel		X	X
Institutional			X
<b>SUBSTRATE TYPE</b>			
Cross-Laminated Timber (CLT)	X	X	X
Dowel-Laminated Timber (DLT)	X	X	X
Glue-Laminated Timber (Glulam)	X	X	X
Nail-Laminated Timber (NLT)	X	X	X
Mass Plywood Panel (MPP)	X	X	X
Radiant Heat (RH)	X	X	X

**Note**

\* USG Levelrock® Brand engineered cementitious underlayments are mixed with sand and water at the job site to yield a lightweight underlayment with a smooth and monolithic surface.

## PRODUCT INFORMATION

See [usg.com](https://usg.com) for the most up-to-date product information.

## CUSTOMER SERVICE

800 621-9523

## WEB SITES

[usg.com](https://usg.com)

[usg.com/masstimber](https://usg.com/masstimber)

## GREENGUARD INFORMATION

GREENGUARD Certified products are certified to GREENGUARD standards for low chemical emissions into indoor air during product usage. For more information, visit [ul.com/gg](https://ul.com/gg).

## CAUTION

Fibers and dust may cause irritation to eyes, skin, nose, throat and upper respiratory tract. Wear eye protection. If eye contact occurs, flush thoroughly with water for 15 minutes. Remove contact lenses and continue rinsing. If on skin: Wash with plenty of water. If irritation persists, call physician. For more information call Product Safety: 800-507-8899 or see the SDS at [usg.com](https://usg.com).

**KEEP OUT OF REACH OF CHILDREN.**

## NOTE

The information in this document is subject to change without notice. USG Corp. and/or its affiliates assume no responsibility for any errors that may inadvertently appear in this document. Consult your USG sales office or representative for information.

## NOTICE

We shall not be liable for consequential, incidental or special damages, directly or indirectly sustained, nor for any loss caused by application of these goods not in accordance with current printed instructions or for other than the intended use. Our liability is expressly limited to the replacement of defective goods or a refund of the purchase price, at USG's option, and does not include costs of labor, floor-covering materials, or any other costs associated with material replacement. Any claim shall be deemed waived unless made in writing to us within thirty (30) days from date it was or reasonably should have been discovered. For all applicable warranty information, please refer to *USG Levelrock® Brand & USG Durock™ Brand Performance Flooring Products Two-Year Limited Warranty for USG Levelrock Applicators* (IG1727) located at [usg.com](https://usg.com).

For all terms and conditions see [usg.com/terms-and-conditions](https://usg.com/terms-and-conditions).

## SAFETY FIRST!

Follow good safety/industrial hygiene practices during installation. Wear appropriate personal protective equipment. Read applicable SDSs and literature before specification and installation.

IG359372-USA-ENG/rev. 4-25

© 2025 USG Corporation and/or its affiliates. All rights reserved. Printed in U.S.A. The trademarks USG, DUROCK, LEVELROCK, SAM-N25, SAM-N75, SHEETROCK, IT'S YOUR WORLD. BUILD IT., the USG logo, the design elements and colors and related marks are trademarks of USG Corporation or its affiliates.

USG products manufactured by or for  
United States Gypsum Company  
550 West Adams Street  
Chicago, IL 60661

**USG**  
IT'S YOUR WORLD. BUILD IT.®